

# MONTHLY MEMBERSHIP PROGRESS REPORT

LOCATION SASKATCHEWAN

District 5 SKN

Results as of: 2/28/2021

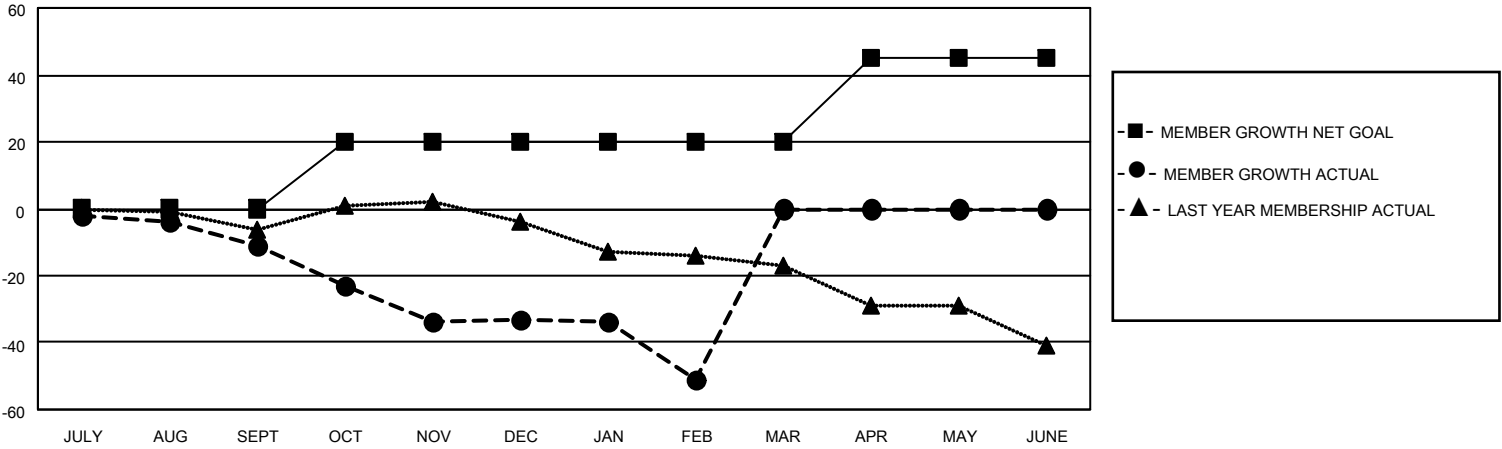
Clubs			
RESULTS FOR 2020-2021			
QUARTER	NEW CLUB GOAL	NEW CLUBS	DROPPED CLUBS
JULY/AUG/SEPT	0	0	0
OCT/NOV/DEC	1	0	1
JAN/FEB/MAR	0	0	1
APR/MAY/JUNE	0	0	0

Members			
RESULTS FOR 2020-2021			
QUARTER	MEMBER GROWTH NET GOAL	MEMBER GROWTH ACTUAL	DROPPED MEMBERS ACTUAL (including transfers)
JULY/AUG/SEPT	0	5	13
OCT/NOV/DEC	20	7	29
JAN/FEB/MAR	0	8	24
APR/MAY/JUNE	25	0	0

**GOALS AND ACTUAL NEW CLUBS CUMULATIVE**



**GOALS AND ACTUAL MEMBERS CUMULATIVE**



DROPPED CLUBS: 2	8 CLUBS OF 58 ADDED 1 OR MORE NEW MEMBERS	<b>GENDER DISTRIBUTION</b>
<b>DROPPED MEMBERS</b>		MALE            798 (73.96%)
DECEASED            9		FEMALE        281 (26.04%)
CLUB CANCELLED    19	<a href="#">CLICK HERE FOR CUMULATIVE MEMBERSHIP DATA</a>	TOTAL FAMILY UNIT MEMBERS            229
OTHER                38		FAMILY MEMBERS PAYING HALF DUES            116
<b>TOTAL                66</b>		